

User Manual

Stainless Steel Portable Thermos

Product No.: SNC2W-22NT

Part Names

Please confirm that all parts are included before use.



Actual volume:
When using inner stopper : 620 mL
When using cap assembly : 670 mL



Thank you for purchasing the stainless steel portable thermos. Before using it, please read through this manual carefully for tips on safe and proper handling. This manual is also quite useful for rare instances where you may need help during use, so be sure to store it in a place for easy access.

Safety Precautions

Be sure to follow these instructions

! WARNING

- Using the cap assembly
 - Use for cooling only. Never fill the product with hot liquid. (Doing so may result in burns.)

Using the inner stopper and cup

- Always use the cup when drinking from this product. (Failure to do so may cause burns.)
- Do not open the inner stopper lid while the product is tilted or close to your face. (The beverage could pour out suddenly or splash, causing burns, etc.)
- Do not shake the main unit right after filling with a hot beverage. (Internal pressure may rise, causing the contents to blow out.)

! WARNING

- Keep out of reach of children. Also be sure that it is not used for pranks.
- Never attempt to repair, disassemble, or modify this product. (Doing so may cause a malfunction or accident.)
- Keep away from fire, such as a heater or stove. (Doing so may deform/discolor the product, or cause a fire.)
- Do not heat up in the microwave. (Doing so may cause injury, malfunction, or accident.)
- Do not store in the freezer. (Failure to do so may cause leakage, damage, or accident.)
- Before carrying this product with a beverage inside, be sure the cup or cap assembly are attached to the top. (Carrying the product while on its side may cause the beverage to leak out, resulting in the soiling of property.)
- Do not use this product while driving.
- Do not carry the product by its cap assembly, inner stopper, or cup. (Doing so may cause a malfunction or accident.)
- When placing this product in a bag, make sure it is not leaking, then store it upright. Also, be sure not to store the bottle with precision devices, such as a mobile phone or camera.
- Pour a beverage up to the bottom of the mouth ring. (Overfilling may cause liquid to overflow when closing the lid, resulting in soiling of property.)
- Do not take hold of the handy pouch grip or shoulder strap to swing it around. (Failure to do so may cause a malfunction or accident. Also note that extra weight may cause the shoulder strap to come off, so be sure to avoid this.)
- Do not allow school-aged children to wear the shoulder strap around their neck. Instead, have them put it across a shoulder to hang diagonally.
- Do not exercise or play around while wearing the handy pouch shoulder strap.
- Do not subject the product to significant shock by dropping it or hitting it against something. (Doing so could damage the product.)
- Do not leave a beverage in this product for a long period of time of time. (Doing so may result in spoiled beverage or deterioration.)
- Be sure to drink tea or similar beverages quickly. (Holding such beverages for a long period of time could result in a change in color or flavor.)
- Be sure to perform product care after using this product to hold tea, coffee, juice, etc. (Failure to do so could lead to odor migration.)
- Be sure to break large pieces of ice into smaller pieces before putting them in the product. (Failure to do so may scratch the product or cause it to leak.)
- Do not fill with alcoholic beverages.

! WARNING (Continued)

- Never fill the product with the following.
 - Dry ice, carbonated drinks, etc. (Internal pressure may rise, causing the contents to blow out.)
 - Milk, beverages containing milk, fruit juice, etc. (Doing so may result in spoiled beverage or deterioration.)
 - Salty soups, such as miso, etc. (Doing so may cause rust to form.)
 - Pulp, tea leaves, etc. (Doing so could cause clogging, leakage, etc.)

! CAUTION

- Do not store in direct sunlight or high-temperature areas such as the trunk of a car. (Doing so could reduce the product's heat/cold retaining properties.)
- Do not place in boiling water. (Heat from this may deform parts, causing leakage, resulting in burns or soiling of property.)
- Do not use a dish washer or dish dryer. (Heat from this may deform parts, causing leakage, resulting in burns or soiling of property.)
- Do not leave the main unit soaked when washing. (Doing so may cause water to seep through the cracks, resulting in leakage, rust, or damaging heat/cold retaining properties.)
- Do not use paint thinner, benzene, metal scrubbers, polishing powder, bleaching powder, cleansers, etc. (Doing so may cause the product to be scratched or form rust.)
- Do not use chlorine bleach. (Doing so could produce rust or cause malfunction.)
- After performing product care, be sure to reattach the gaskets. (If not properly attached, leakage may occur.)
- If you do not intend to use this product for a long period of time, wash it to remove any dirt, dry it thoroughly, and store it in a dry area.

Product Care

Be sure to perform product care after use on the same day.
Use a soft sponge for product care.

- Product care for the main unit (outer and inner)
 - Use dish detergent diluted with lukewarm water and a soft sponge to wash the main unit, then rinse. Wipe the water away and dry thoroughly.
- Cap assembly, inner stopper, cup
 - The cap assembly, inner stoppage, and cup can be washed whole. Be sure to rinse the product after washing with a sponge. Wipe the water away and dry thoroughly.
- Gaskets
 - Remove gaskets, wash them whole with lukewarm water, then wipe water away with a dry cloth.
- Handy Pouch
 - Wash gently with cold or lukewarm water under 30 deg C, then dry thoroughly.

Product Care Precautions

- After washing the main unit, be sure to wipe it dry right away. (Failure to do so could leave water spots, rust, or soil property.)
- Do not use paint thinner, benzene, metal scrubbers, polishing powder, bleaching powder, cleansers, etc. (Doing so may cause the product to be scratched or form rust.)
- Do not use boiling water, a dish washer, or dish dryer to clean the main unit, cap assembly, inner stopper, or cup. (Doing so may deform parts, causing leakage.)
- Do not use chlorine bleach. (Doing so could produce rust or cause malfunction.)
- Do not set the main unit, cap assembly, or inner stopper to soak.
- Do not perform product care while the cap assembly, inner stopper, and cup are attached to the main unit. Be sure each of them are removed for proper product care.

Product Care Precautions (Continued)

- If you do not intend to use this product for a long period of time, wash it to remove any dirt, dry it thoroughly, and store it in a clean area.
- Please refrain from using alkaline detergent or orange oil detergent, as it could cause the pattern/design to peel off, or result in discoloration.

When rough material or red, rust-like spots are found in the bottle

- When red, rust-like spots are visible
 - Iron content, etc. from water is stuck to the unit. Pour lukewarm water including approximately 10% vinegar into the main unit, let it sit for about 30 minutes, then use a soft sponge brush to thoroughly wash the inner surface of the bottle. Rinse thoroughly with fresh water so that no vinegar remains.
- When rough material is stuck inside
 - Calcium from water is stuck to the unit. Pour lukewarm water including 1 to 2% citric acid into the main unit, let it sit for about three hours without the cap assembly, inner stopper, or cup attached, then use a soft sponge brush to thoroughly wash the inner surface of the bottle. Rinse thoroughly with fresh water so that no citric acid remains.

Troubleshooting

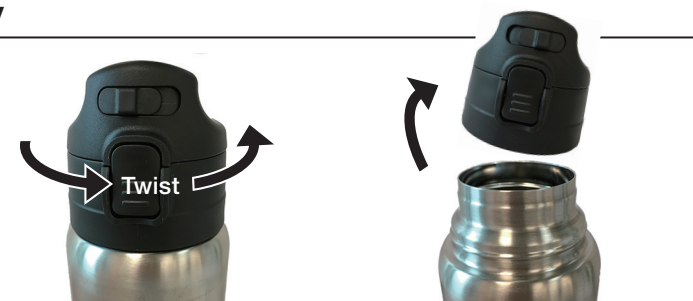
Inspect the product as follows.

Problem	Inspection	Solution
Leaked from the inner stopper/cap assembly.	Is the inner stopper closed securely?	Securely close the inner stopper.
	Is the cap assembly closed securely?	Securely close the cap assembly.
	Did you overfill the product?	Reduce the beverage amount.
	Is the gasket attached correctly?	Make sure all gaskets are attached securely in their proper positions.
Heating/cooling effectiveness is weak.	Is there a small amount of content remaining in the stopper?	After pouring, position the product upright and close the inner stopper's open/close lever. Face the spout downward and pour out any remaining liquid.
	Is it filled with an adequately hot (or cold) beverage?	Pour in hot (or cold) water. This is an effective way to pre-heat (or pre-cool) the product.
When rough material or red, rust-like spots are found in the bottle.	Is there enough liquid inside the product?	Increase the beverage amount.
	When red, rust-like spots are visible.	Iron content, etc. from water is stuck to the unit. Pour lukewarm water including approximately 10% vinegar into the main unit, let it sit for about 30 minutes, then wash it thoroughly.
When rough material is stuck inside.	When red, rust-like spots are visible.	Calcium from water is stuck to the unit. Pour lukewarm water including 1 to 2% citric acid into the main unit, let it sit for about three hours, then wash it thoroughly.
	When rough material is stuck inside.	Calcium from water is stuck to the unit. Pour lukewarm water including 1 to 2% citric acid into the main unit, let it sit for about three hours, then wash it thoroughly.

Before Use • Before using this product for the first time, be sure to wash it well with dish detergent. • Inspect the product for any rattling or damage before use. If any issues are found, refrain from modifying or using the product.

Using the cap assembly

1. Remove cap assembly



2. Fill with beverage

- Pouring a small amount of cold water into the main unit in advance to pre-cool it for about a minute is an effective way to maintain the desired temperature.
- Pour beverage up to the line indicated by the → on the photo to the right. Closing the cap assembly while the product is too full may cause the beverage to overflow. If overfilled, be sure to pour out a small amount of liquid before closing the cap assembly.



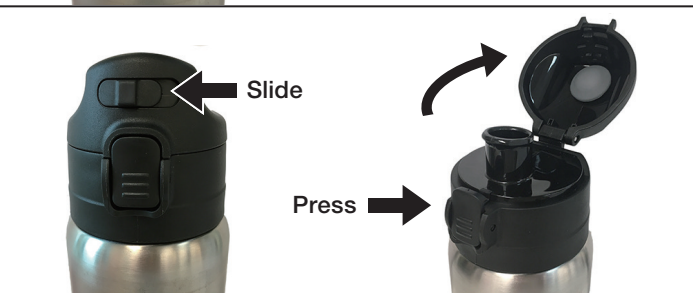
3. Close cap assembly

- Twist the cap assembly in the direction of the arrow to close it.



4. Remove lid and drink

- With the unit standing upright, slide the lock to the left.
- Press the push button to open the lid, then slowly tilt to drink.



5. When done drinking

- When done drinking, stand the unit upright and close the lid.
- Slide the lock to the right to lock it.



How to use the inner stopper and cup

1. Remove cup and inner stopper

- Do not open the inner stopper while the product is tilted or close to your face. (When filling with a hot beverage, internal pressure may rise causing steam to blow out.)



2. Fill with beverage

- Pouring a small amount of hot (or cold) water into the main unit in advance to pre-heat (or pre-cool) it for about a minute is an effective way to maintain the desired temperature.
- Pour beverage up to the line indicated by the → on the photo to the right. Overfilling may cause the beverage to overflow when closing the inner stopper. When overfilling, be sure to pour out a small amount of liquid before closing the inner stopper.



3. Close inner stopper

- Before closing the inner stopper, make sure the gasket is properly attached.
- When placing this product in a bag, make sure it is not leaking, then store it upright.
- When filling the product with a hot beverage, make sure to wait several seconds before closing the inner stopper.
- When releasing pressure, or the inner stopper's open/close lever is difficult to move, be sure to stand the product upright, and being careful not to burn yourself, use a cloth (towel etc.) to carefully open the stopper.



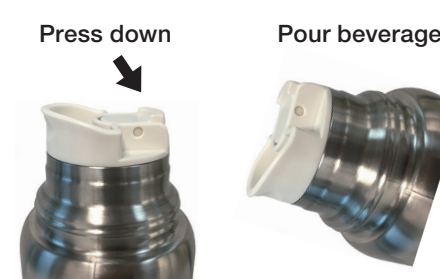
4. Pour beverage



How to use the inner stopper and cup (Continued)

5. After pouring

- After pouring/drinking the liquid, lightly press down on the open/close lever from the top to close the stopper.
- Some liquid may remain in the stopper. After pouring, position the product upward for a few seconds, then press the lever down to close the stopper. Face the spout downward and pour out any remaining liquid.



Attaching gaskets

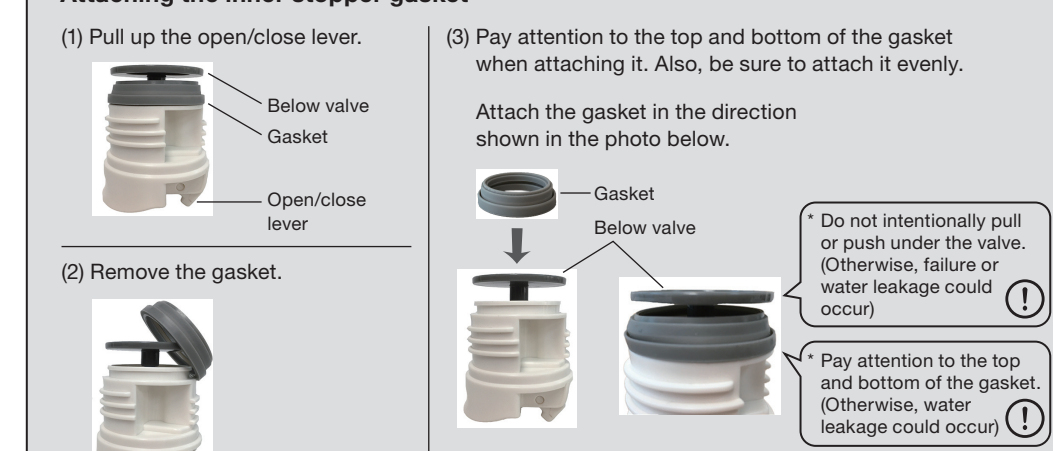
- Attaching the lid gasket
 - Align with the gap to attach it.



- Attaching the cap unit gasket
 - Make sure the cap unit gasket's tab is facing upward, then press the gasket into the cap unit.
 - Press down firmly along the sides with your fingers to be sure it is completely attached with no loose areas. If the gasket is loose, leakage may occur.



- Attaching the inner stopper gasket
 - Pull up the open/close lever.
 - Remove the gasket.
 - Pay attention to the top and bottom of the gasket when attaching it. Also, be sure to attach it evenly.



- This may be difficult. Perform this step carefully.

- After assembly, operate the open/close lever to make sure it works properly. Also, make sure there is no space between the inner stopper and gasket.

If gaskets are not attached correctly, leakage may occur. When removing the lid gasket, cap unit gasket, or inner stopper gasket for product care, be sure to reattach them correctly. Gaskets are expendable parts. Check them every six months to a year to determine if replacement is required.