

## User Manual

Thank you very much for purchasing the "Humidifier with Light." This user manual contains detailed precautions and warnings to be noted for using this product. Before using this product, be sure to carefully read through the user manual to gain an understanding of the do's and do not's, and then follow them to avoid accidents. This product was developed for general household use. Do not use this product for industrial use. Doing so may lead to accident or malfunction. After reading this manual, be sure to store it in a place where it can be easily accessed when needed. Some design features or specifications may be altered without prior notice for product improvement. Please understand in advance.

## Safety Precautions

Safety content is provided here to prevent harm to the user or others, and to prevent property damage, in advance. Be sure to gain a thorough understanding of these guidelines before use, and follow them accordingly.

- WARNING** Handling the product contrary to this display could result in serious injury or death.
- CAUTION** Handling the product contrary to this display could lead to physical injury or property damage.

### To use this product safely

- Using this product in a way that is not in compliance with the user manual, or using it for something other than the intended use, could lead to accident or injury. Refrain from doing so.
- Please note that we will not be held responsible for damage or injury as a result of customer carelessness.
- If you feel the product is malfunctioning, refrain from use.
- If the customer fails to act in accordance with user manual guidelines or instructions, our company will not be held any responsible.
- This product is not a toy. Do not let children use this product as a toy.

### Icons displayed

- This is the **DO NOT** symbol.
- This is the **DO** symbol (actions that must be performed).
- This is the **CONFIRM** symbol.

### WARNING

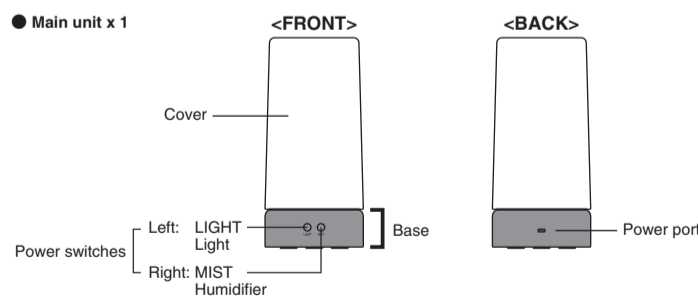
- This product is not a toy.
- Since this product is a precision device, refrain from handling it recklessly, or placing it in an area where it may fall.
- When using this product where small children are present, watch their actions carefully to prevent accident or injury.
- This product includes small parts. Never place this product in your mouth. Doing so may cause choking.
- If this product malfunctions, do not attempt to disassemble it yourself. Instead, get in contact with the product help desk.
- Only use this product as originally intended.
- Be sure to use the included USB cable for power.
- Do not cover this product with paper or cloth etc. while in use. Doing so could cause a fire.
- Do not peek inside of the tank while the LED lamp is lit. Doing so could lead to blindness or injury.

### CAUTION

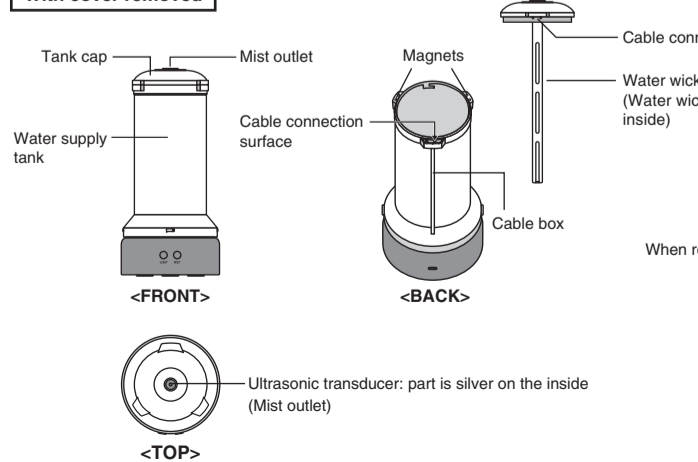
- Do not use the bag to cover your head or face. Doing so could result in choking.
- The bag is used as packaging material, so please dispose of it immediately after opening the product.
- Do not let a small child use this product unattended, and be sure to keep it out of reach from small children.
- Keeping this product in direct sunlight may cause color fade or malfunction.
- When placing this product, be sure to keep it away from areas where mist could make direct contact with curtains, walls, furniture, etc. If ample distance is not provided, water droplets may attach to or fall on these objects.
- Do not use in moist areas such as near a water supply or in a bathroom.
- Do not use on top of a heating device, TV, heated carpet, or other electronic appliances.
- Keep away from fire and heating devices. Failure to do so could degrade or disfigure the surface of the product. It could also cause a fire, so do not leave unattended in such places.
- Do not use outdoors.
- Set and use on a flat surface.
- Do not place or store this product on an unstable surface.
- Do not touch this product's power switches, power port, or USB cable with wet hands.
- Only use tap water in this product.
- Do not obstruct the mist outlet.
- Do not wipe or pour water on this product.
- Do not use unnecessary physical force when touching the power switches, power port, or USB cable.
- Do not use the product if the USB cable is not securely connected.
- Do not damage the USB cable.
- Do not bundle with other USB cables when in use.
- Do not turn the power ON for use when there is no water in the water supply tank. Doing so could cause a malfunction.
- If freezing condition may occur, be sure to dispose of water in the water supply tank in advance.
- If abnormal conditions occur (sounds, smells, overheating of USB cable/unit), be sure to immediately stop usage, then remove the USB cable from the unit and USB port to prevent accidents.
- Do not disassemble or modify this product.
- If the product is not to be used for a long period of time, remove the USB cable's connector from the computer's USB port, etc.

## Part Names and Components

### Main unit x 1

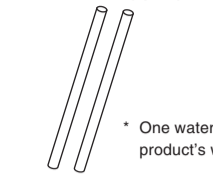


### With cover removed



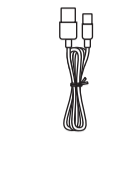
## Part Names and Settings (continued)

### Water wick (spare) x 2



\* One water wick is already set inside the product's water wick unit.

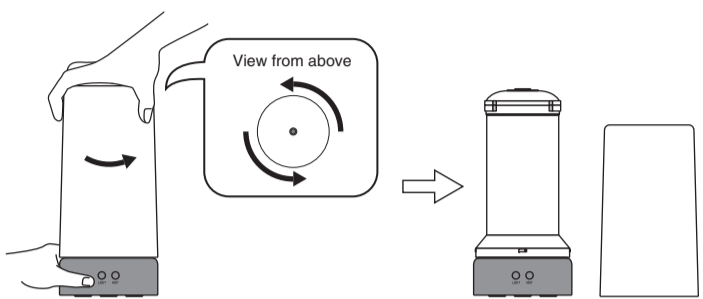
### USB cable x 1



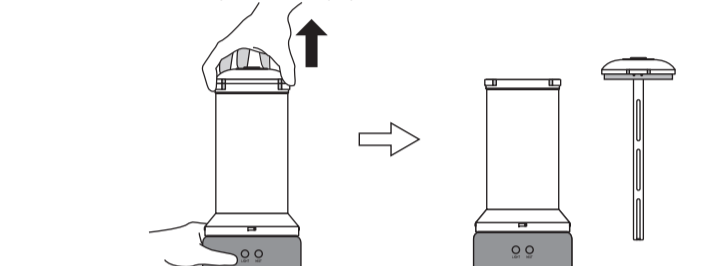
## How to Use

### 1 Add water to the tank

- Hold down the base, and twist the cover in the direction of the arrow to remove it.

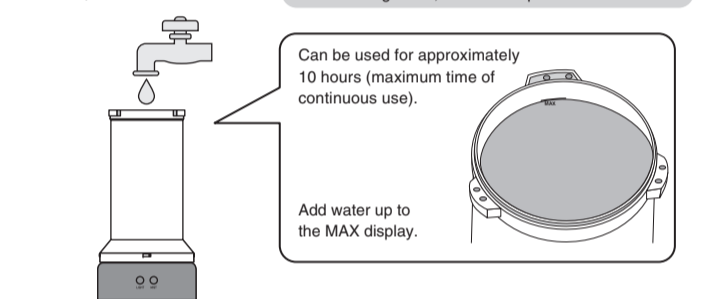


- Hold down the base, and pull the tank cap upward to remove it.



- Add tap water to the tank.

When adding water, be sure the power is turned OFF.

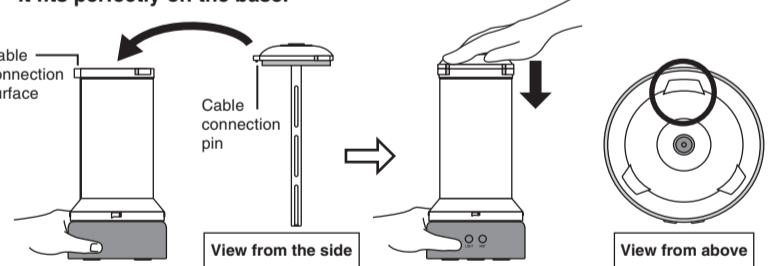


- Before adding water, be sure to remove the tank cap from the water supply tank. If water gets on the tank cap, it may cause a malfunction.
- Mineral water, etc. may corrode the ultrasonic transducer with chlorinated lime, etc. leading to malfunction, so please refrain from using this.
- If the cable connection surface or magnets get wet, immediately wipe them dry. Using them while wet may cause a malfunction.

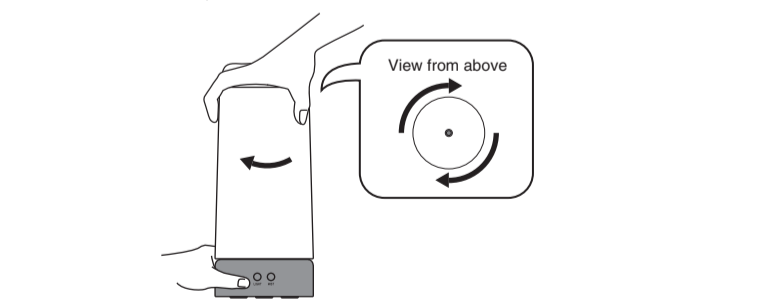
### 2 Hold down the base of the product to firmly fasten the tank cap and cover.

- Press in the tank cap so that the tank's cable connection surface and tank cap's cable connection pin line up and fasten together.

Hold down the base of the product and press down to close the top, so that it fits perfectly on the base.



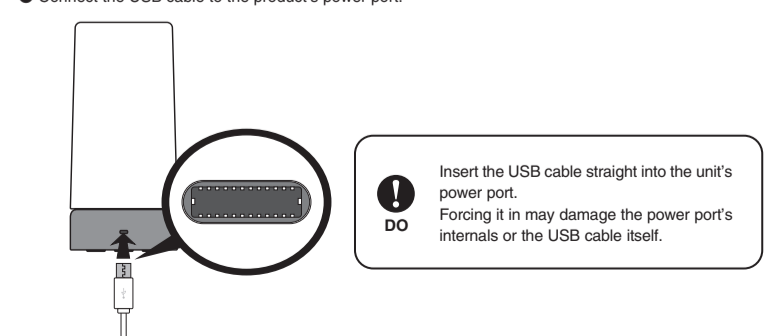
- Fit the cover to the tank, and twist in the direction of the arrow to close it.



The product is heavy with water in the tank, so be sure to hold it firmly by the base when carrying.

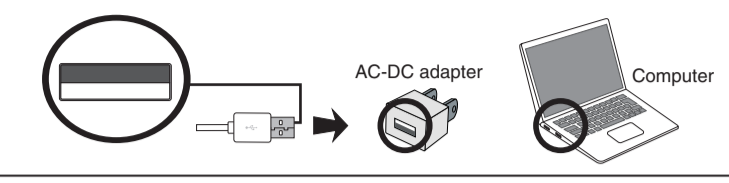
### 3 Connect the USB cable to the power port on the product's base, and to the USB port of a computer or AC adapter.

- Connect the USB cable to the product's power port.



Insert the USB cable straight into the unit's power port. Forcing it in may damage the power port's internals or the USB cable itself.

- Connect the USB cable's USB connector to a computer or AC adapter, etc., then turn on the power switch.

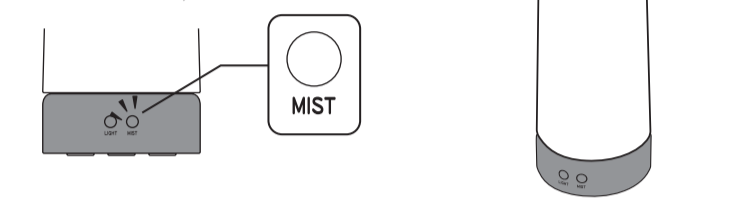


When using a computer USB port etc., ample power may not be provided at times. In such a case, use a commercially-available AC-DC adapter instead.  
Compatible AC-DC adapter product specs: [Input] 100-240 V 50 Hz/60 Hz, [Output] 5 V/1 A to 2.4 A

### 4 Turn it on

#### Humidifier mode

- Pressing the power switch for "MIST" on the right will illuminate the switch, and start humidification.

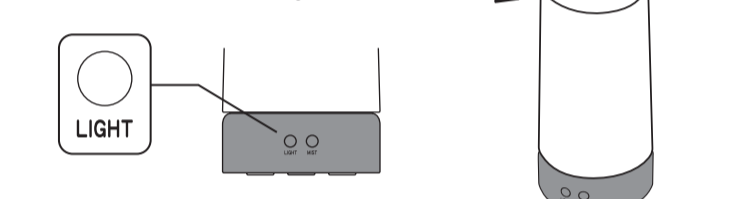


Water droplets may attach to nearby objects in some cases, causing them to get wet. Please note that precision components of a nearby computer etc. may malfunction or suffer damage due to water droplets.

\* There may be a delay in mist production until water permeates throughout the system. Once water has thoroughly permeated the water wick, mist will start to be produced. It may take approximately 1 to 3 minutes for water to sufficiently permeate the water wick.

#### Light mode

- Pressing the power switch for "LIGHT" on the left will illuminate the cover section in white light.



#### LED

- The product's LED lamp is embedded, and cannot be replaced.
- Since LED light sources include variance, some differences may exist in the luminescent color and brightness of each product, even when sharing a model number.
- If irradiation is from a close distance, there may be a variance in light depending on the surface being irradiated.

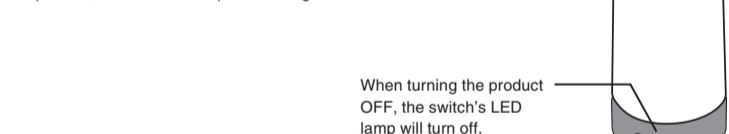
Humidifier Mode and Light Mode can run at the same time.

### 5 After use, turn the power OFF, then remove the USB cable from the USB port and power source.

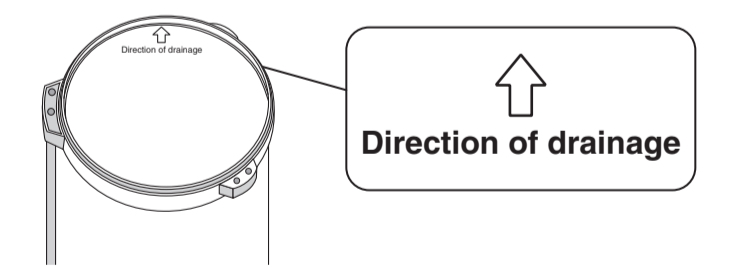
- For safety purposes, humidification mode has been limited to approximately 10 hours of successive operation. After approximately 10 hours of continuous use, it will shut off automatically.
- However, there is no automatic shutdown function for light mode.

#### Humidifier mode

- Pressing the power switch once again will cause the product to turn off automatically once 10 consecutive hours have passed, and the LED lamp will no longer be lit.

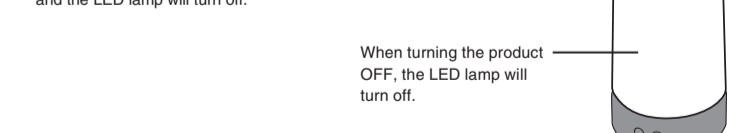


- Be sure to dispose of all water after use. When disposing of water, be sure to do so in the "direction of drainage."
- \* Draining water in the wrong direction could lead to malfunction.



#### Light mode

- Pressing the power switch once again will turn the product OFF, and the LED lamp will turn off.



## Product Care

- Before performing product care, be sure to turn off the power and remove the USB cable.
- Be sure to change out water in the water supply tank on a daily basis.
- When performing product care, do not use substances containing volatile organic solvents such as benzene and paint thinner.
- To prevent mold and unwanted bacteria from forming, be sure to frequently remove the water wick to rinse and dry out thoroughly.
- If this product is not to be used for a long period of time, remove the water wick to thoroughly dry and store away. Also be sure to remove water from the water tank and main unit, and dry those components thoroughly before storage.

## Product Care (continued)

### Taking care of the mist outlet

Water scale and other dirt will accumulate around the mist outlet when in use.

Be sure to frequently follow product care instructions.

- Use a cotton swab, etc. to wipe moisture and dirt from the inside of the mist outlet.
- Use a dampened towel or other soft cloth to wipe moisture and dirt away from the area around the mist outlet.

Do not use volatile organic solvents such as benzene or paint thinner, chemical rags, metal or abrasive scrubbers. Doing so may deform or discolor the product.

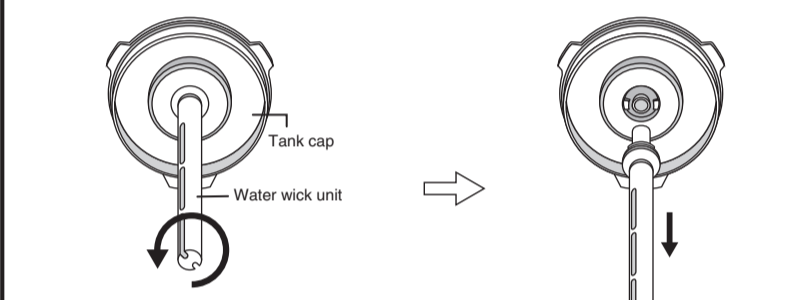
### DO NOT

- Do not use anything abrasive to rub the ultrasonic transducer from inside of the mist outlet. Doing so could cause the ultrasonic transducer to split or warp, allowing water to immerse the inside of the product, reducing the amount of mist produced.
- Do not use chlorinated, acidic, or enzymatic detergents. Doing so could clog the mist outlet with detergent, releasing toxic gas and leading to malfunction.

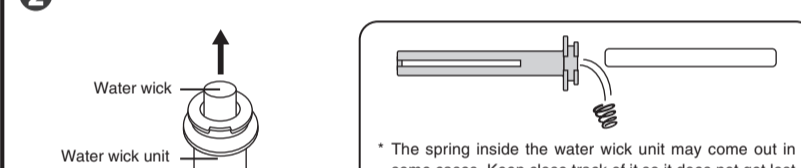
## Replacing the water wick

- If the water wick begins to yellow, it needs to be replaced.

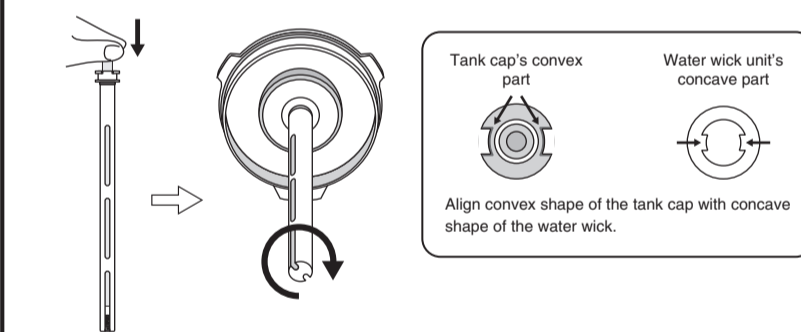
### 1 Twist the tank cap's water wick unit in the direction of the arrow, and gently pull it downward.



### 2 Remove the water wick from the water wick unit.

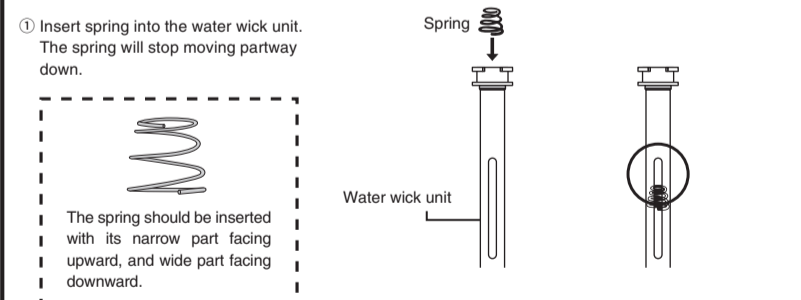


### 3 Insert a new water wick into the water wick unit. Press the water wick unit down as far as it goes into the tank cap, then twist in the direction of the arrow to fasten it.

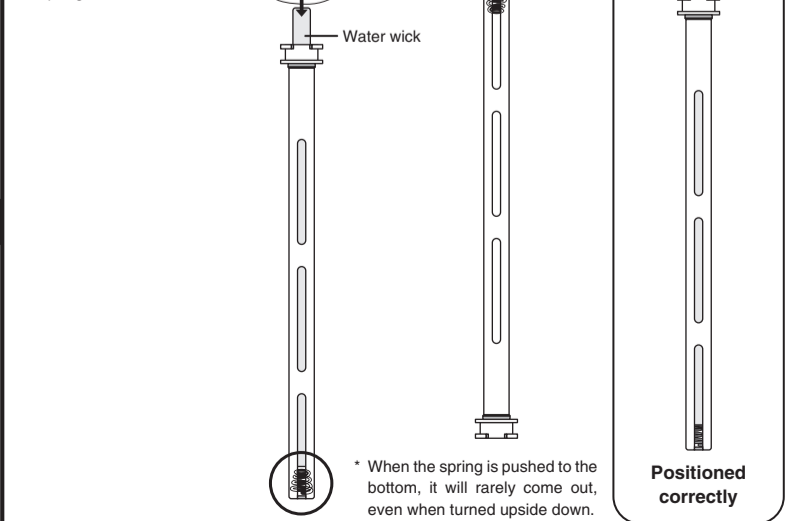


### How to set when the spring comes out

The spring is a small component. Keep away from children so that they cannot swallow it. Also keep close track of it so it does not get lost.



- Insert spring into the water wick unit. The spring will stop moving partway down.



When the spring is pushed to the bottom, it will rarely come out, even when turned upside down.

## Usage Request

- Be sure tap water is used in the water supply tank.

Do not use the following:  
- Alkaline ionized water - Mineral water - Water untreated for bacteria - Well water - Dirty water  
- Boiling water - Hot water above 40 deg C - Chemical agents - Aromatics - Detergents  
- Liquid other than water

- Mineral water, etc. may corrode the ultrasonic transducer with chlorinated lime, etc. leading to malfunction, so please refrain from using this.
- This product is comprised of precision electronic components. Do not drop it, or submerge it in water.
- Do not allow water vapor to make contact with the product's display or other precision components.
- Please note that compensation will not be provided for malfunction, data/program loss, or other damage that may be incurred while this product is connected to a PC, etc.
- Please note that water droplets may attach to nearby objects in some cases, causing them to get wet.
- In some environments, water droplets produced by this product may work their way downward to where it is positioned. In such a case, we recommend using the product in an area that will not be negatively affected by moisture, on top of a flat saucer, etc.
- Water droplets tend to accumulate around the product's mist outlet while in use, so please use a tissue, etc. to wipe them away.
- This product is to be used for indoor humidification only. Do not use it for any other purpose.

## Occurrences during use \* These do not indicate a malfunction.

### Odor

- Depending on the tap water in your region or residence, a slight odor may be apparent in some cases.
- Failing to keep the product clean may cause bacteria, mold, etc. to accumulate, giving off a strong odor. To prevent foul odors, be sure to perform the following care steps every day when in use.

### White powder

- Crystallized substances such as the chlorinated lime and mineral components found in tap water may travel together with mist and stick to its surroundings. Avoid placing this product near objects that can be directly covered by the mist. If mist does cover an object, wipe it off thoroughly.

### When dirt accumulates around mist outlet and tank

- Continued use without cleaning this product may cause dirt or white powder to accumulate in the mist outlet or tank. This could decrease humidification performance, leading to malfunction, so be sure to care for the product as directed.

## Product Specifications

Power supply	: USB
Rated voltage	: DC5V
Rated current	: 800 mA
Rated power	: Humidifier usage only, 2 W / light usage only, 2 W / combined usage, 4 W
Water container capacity	: Approx. 1 liter (actual)
Humidification quantity	: Approx. 80 mL/h
Humidification method	: Ultrasonic
Product weight	: Approx. 800 g
LED lifespan	: Approx. 60,000 hours
Size	: 11.0 cm diameter, 25.2 cm height
Continuous usage	: Approx. 10 hours (power shuts off automatically)
Materials	: ABS resin, polypropylene
Included accessories	: water wick x 3 (one already installed), USB cable (1 m) x 1, User manual / warranty
Made in China	