

# Sanrio Handy Fan

For Ages 6 & Up



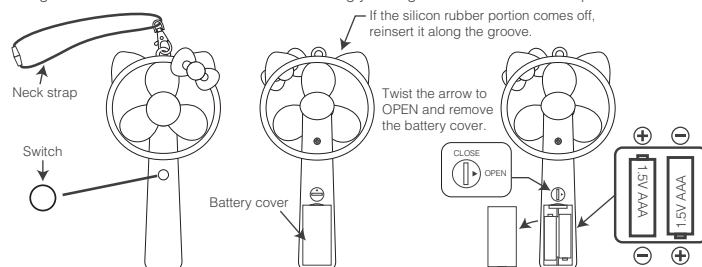
When the fan is spinning, do not touch the blades or bring it close to your face. Be careful not to let the blades get tangled in your hair.

## Inserting Batteries

- ① Remove the battery cover from the back of the main unit. Insert AAA batteries with + and - in the correct position. A coin, etc. can be used to open or close the battery cover screw.
- ② The battery cover has a tab on one end, so be sure to insert it correctly in the groove to close it, and twist the screw so that its arrow is in the CLOSE position to lock it in place.

## How to Use

Holding down the switch will turn the fan on. Releasing your finger from the switch will stop the fan.



## Precautions – To prevent malfunction –

- Do not drop this product, submerge it in water, or get it dirty.
- Do not pull on the fan blades.
- A removable apparatus is used for the neck strap to prevent it from tightening around the neck.
- Be sure to remove the neck strap from the main unit before use.
- Do not use, store or leave this product in an environment in unusually high or low temperatures, or where a lot of dust is present.
- When storing away this product or not using it for a long period of time, be sure to remove the batteries.
- Do not subject this product to heavy impact or intense vibration.

## Before using this product...

### Safety Precautions

- When using the fan close to your face, it may get tangled up in your hair, so use with caution.
- When fan blades are rotating, do not insert fingers or position them close to your eyes.
- When storing this product, keep it in an area where young children cannot reach it.
- This product includes small parts. Use with caution so that young children cannot swallow them.
- Do not disassemble or modify this product.
- Do not touch fan blades while they are rotating.
- Do not cause fan blades to spin recklessly, or abruptly stop them from spinning.
- Do not spin the neck strap around recklessly or pull with force.
- If the product is damaged with scratches, cracks, etc., or leakage, unusual sounds, or strange movement is detected, stop using it immediately.

### Battery Cautions

- Insert with + and - in the correct position.
- Do not mix battery types, such as new and old dry cells, or alkaline and manganese.
- Never use rechargeable batteries (nickel-cadmium, etc.) or any nickel-based batteries (oxyride, etc.)
- Do not short, recharge, disassemble, or heat up the product, and do not expose it to fire.
- If liquid leaking from a battery gets in your eye, immediately flush it out with a large volume of water, and contact a physician. If this liquid makes contact with skin or clothing, wash with water.
- When disposing of batteries, comply with local ordinances of proper disposal.

Materials main unit: ABS resin, silicon rubber / fan blades: EVA resin  
Batteries AAA x 2 (sold separately)  
Continuous operation time: Approximately 30 minutes (when using alkaline batteries / times will differ by battery brand and type)