

Product Care To prevent odors, soiling, and mold so that this product can remain clean for long-term usage, be sure to perform the following care steps after use.

Always perform product care after using it. **CAUTION**

Main body

- Do not soak when washing the main body. Water may enter the gaps between plastic and metal parts and cause rust, and this could soil other parts.
- Do not use a dishwasher or dryer to clean this product. (Otherwise, scratches or deformation could occur)

- The inner stopper can be washed off by removing the gasket.
- Use a neutral detergent for regular cleaning. If the product is dirty, wash with running water, and then wipe it off with a dry cloth.

Inner stopper

- Do not use a dishwasher or dryer to clean this product. (Otherwise, scratches or deformation could occur)
- Do not use chlorine bleach. (Otherwise, the internal spring may rust)

- Do not soak when washing.
- The inner stopper cannot be disassembled.

Inner stopper * The inner stopper is a consumable item. If it becomes damaged, replace it with a new one (sold separately). **CAUTION**

Red rust spots

- This is iron content, etc. contained in water stuck to the product. Dilute about 10% of vinegar in warm water, put it in the container for about 30 minutes, and then scrub with a soft brush.

Rough textures

- For minerals (calcium), etc. contained in water, dissolve 1-2% citric acid in lukewarm water and wash well after about 3 hours.

- For the inner container, dilute oxygen-based bleach or dish washing detergent in lukewarm water, put it in the container for about 30 minutes, and then wash with a soft sponge and dry thoroughly.

- Do not use chlorine bleach. (Otherwise, rust could occur)

Extreme dirt

- For dirt on the outside of the main body, moisten a soft cloth with warm water and detergent, squeeze it out firmly, wipe off the dirt from the product, and then wipe it off with a dry cloth.

- Do not use bleach on the outside of the main body. (Depending on the ingredients, it may cause the surface to peel off)

Storage

- Before storing the product, be sure to remove all dirt and dry thoroughly.

How to Use

Always pour hot drinks into the cup. (Drinking directly from the product could cause burning) **WARNING**

Pre-cooling/pre-heating the main body (inner container) is effective for cold insulation/heat insulation.

Precautions for inner stopper **CAUTION**

- Do not boil the cup, inner stopper, or main body. (Otherwise, deformation, discoloration, or malfunction could occur)
- Use the product in the upright position. (Otherwise, it might leak when you turn it upside down)

- Before using the product, securely attach the inner stopper to the main body. (Otherwise, it might leak)

- When operating the open/close button, operate it by placing the product on a level surface and holding it firmly.

- Do not place in a dishwasher or dryer, or boil the product. (Otherwise, deformation or inner stopper slippage could occur.)

- If you put hot drinks in the product, wash the product only after the main body and inner stopper have completely cooled.

When pouring hot or cold drinks into the cup **CAUTION**

- If you put ice in the product, the flow rate may be slightly less when drinking.

- When pouring a drink, place the cup on a level surface, hold the body of the product firmly, and pour it out slowly.

- After pouring in a hot drink, the button may become hard to operate due to the increased internal pressure.

- Be especially careful when pouring hot drinks.

- After pouring into the cup, place the main body on a level surface and firmly press the open/close button to close the stopper.

- Grasp the cup firmly when drinking (be careful of burns when drinking hot drinks)

- After using the cup, wipe out liquid inside the cup and return it to the main body.

- Always pour hot drinks into the cup. Do not drink from the product directly, since you could suffer burns.

Safety Precautions

- Please read these "Safety Precautions" carefully before use and use the product correctly.
- These cautions are provided to ensure safe and proper use of the product and to prevent harm and troubles from happening to users and other people.

△ This symbol indicates that handling the product incorrectly could cause an accident.

WARNING Handling the product contrary to these warnings could result in death or serious injury.

CAUTION Handling the product contrary to these warnings could result in serious injury or property damage.

⊘ This symbol indicates matters that are prohibited or require confirmation. Handling the product incorrectly could cause an accident.

⊘ This symbol indicates prohibited matters.

ⓘ This symbol indicates content that must be confirmed by adults.

Be sure to follow these instructions **WARNING**

- Do not set in an area accessible by toddlers or infants. Also be sure that it is not used for playing or pranks. (This could cause a serious accident such as injury, etc.)

- Keep away from fire, such as a heater or stove. (Otherwise, a fire could occur. It could also cause deformation or discoloration of the product)

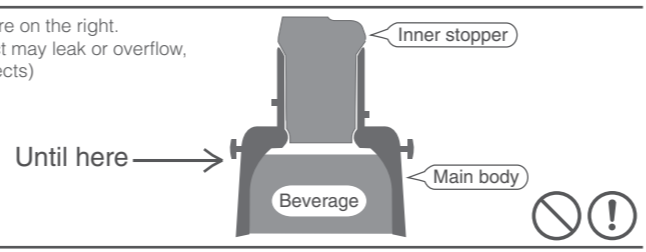
- Do not exercise while using the shoulder strap. In addition, do not use the shoulder strap while playing on playground equipment. (The product could become very dangerous and cause serious injury if it gets entangled or tightened around the body)

- Do not wear the shoulder strap around the neck. Instead put it over a shoulder to hang at an angle.

- Do not handle the product roughly, such as swinging it. (The product could become very dangerous and cause unexpected accidents if it collides with a human body)

- When operating the open/close button, use the product after positioning it upright. (If you put hot drinks in the product, be careful not to burn yourself since the internal pressure will rise and steam will blow out)

- Fill up to the limit shown in the figure on the right. (If you put in too much, the product may leak or overflow, causing burns or soiling other objects)



Be sure to attach parts made exclusively for this product. **CAUTION**

How to operate the inner stopper

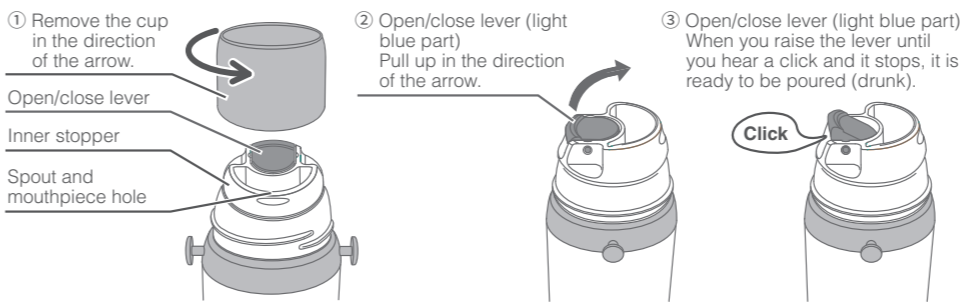
When operating the open/close button, use the product after positioning it upright. (If you put hot drinks in the product, be careful not to burn yourself since the internal pressure will rise and steam will blow out) **WARNING**

① Place the product on a level surface and remove the cup. (It can be removed by turning counterclockwise when viewed from the top of the product)

② Raise the open/close lever of the inner stopper toward the arrow until it clicks. (It may become hardened due to increased internal pressure)

③ When you hear a "click," it is ready to be poured (drunk). Refer to the explanation on page 4 to use the product. (The liquid content may rush out, so be especially careful with hot drinks.)

- After pouring out, some liquid may remain in the inner stopper. After shutting the open/close button, turn the spout down and drain the liquid.

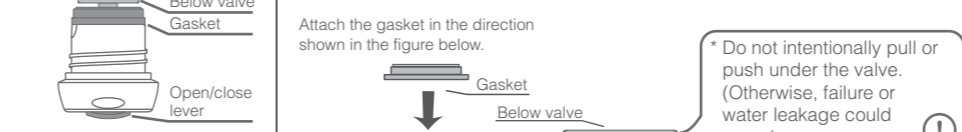


- After pouring out or drinking, lightly push down on the open/close lever from the top and close the stopper.

- After closing the stopper, lightly tighten the cup.

How to attach and remove the gasket You can wash the gasket.

① Raise the open/close lever.



② Remove the gasket.



* This may be difficult. Perform the work carefully.

Be sure to follow these instructions. **CAUTION**

WARNING Please note that, if these precautions are not followed correctly, our company will not be held responsible

- Only use this product to keep beverages warm or cool.

- Do not subject the product to significant shock by dropping it or hitting it against something. (If the surface is dented, it may reduce the product's heat-retaining/cooling capabilities.)

- Do not use chlorine bleach.

- Do not use paint thinner, benzene, metal scrubbers, polishing powder, cleansers, etc. (Otherwise, scratches, rust, or malfunction could occur)

- When using a hot tea kettle, do not allow its metal parts to touch this product. (Otherwise, scratches or deformation could occur)

- Do not use a dishwasher or dryer to clean this product. (Otherwise, scratches or deformation could occur)

- Loosen the inner stopper when storing the product in order to protect the gasket during long periods of non-use.

- Do not put canned juice in the containers. (Otherwise, deformation and malfunction could occur)

- Be sure to break pieces of ice into smaller pieces before putting them in the product.

- Do not wash the main body without taking it apart. (Water may enter and cause rust, and this could soil other parts.)

- When putting the product in a bag, place the main body in the upright position to prevent leakage. Also, do not carry it in a bag with valuables (such as a mobile phone or camera).

- If you keep hot tea in the product for a long time, the color of the tea could change. We recommend using tea bags when going out.

- After using the product, wash the main body (inner container) with a handle-attached sponge or other cleaning object. (This prevents occurrence of odor)

- Always attach the cup when carrying the product. (This prevents inner stopper contamination)

- The inner stopper and cup are made of plastic and can be damaged by improper use. Do not drop or give a big impact to the product when using it.

Never fill the product with the following: **CAUTION**

- Dry ice and carbonated drinks (The inner pressure could rise and the inner stopper could become stuck, causing danger such as content blow out)

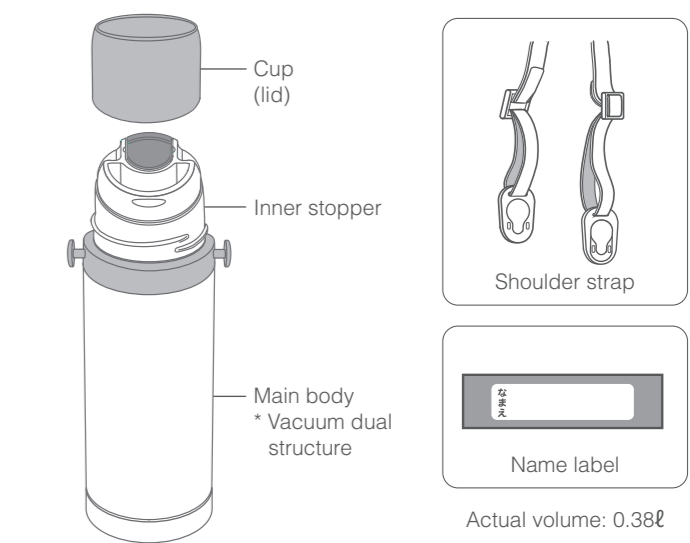
- Soups and other salt-containing liquid foods (Even though the inner container is made of stainless steel, these types of foods can cause rusting)

- Milk, beverages containing milk, fruit juice, etc. Pulp, tea leaves, etc. (This may lead to product malfunction such as clogging, leakage, etc.)

Stainless Steel Portable Thermos

User Manual

Important Read through this manual carefully before use. Be sure to store this instruction manual for future reference.



Before Use

- Use after removing deodorizers from the inside.

- Check that all parts are included before use.

- Carefully wash the cup, main body, and inner stopper before use.

- Always attach the cup when carrying the product. (This prevents inner stopper contamination)

How to attach and remove the cup and inner stopper

- Remove by turning counterclockwise. Attach by turning clockwise as viewed from the top of the water bottle (tighten firmly)

Troubleshooting

Problem	Inspection point	Solution
Main body	Is the inner stopper closed tightly?	Tightly close the inner stopper.
Heating or cooling effectiveness is weak	Is the bottle damaged?	If the main body becomes dented, the vacuum insulation layer may lose its retention and heating/cooling effectiveness may become impaired.
	Is there enough liquid content inside?	Increase the amount of content.
Inner stopper	Is the inner stopper gasket attached correctly?	Refer to the figure in the manual and attach the gasket correctly.
Liquid is leaking	A small amount of liquid may remain on the inside of the inner stopper.	After closing the operation button, use the product by turning the spout down and draining the liquid.

* The inner stopper is a consumable item. Check its condition about six months to one year after use.

Attaching the shoulder strap **CAUTION**

- Attach the shoulder strap firmly upward from the direction in which the hook was held.

- After attaching it, pull the strap and check that it is securely attached.

