

Product Care

To prevent odors, soiling, and rust so that this product can remain clean for long-term usage, be sure to perform the following care steps after use.

- Immediately wash clean and dry thoroughly after use.
- Remove lid gasket/seal gasket and wash clean.
- When not using the product for a long period of time, wash it clean, then dry thoroughly and store in an area free of high - temperature and humidity.

Part Name	Cap unit		Main unit	
	Lid Cap unit	Lid gasket Seal gasket	Inside	Outside
Rinse	○	○	○	○
Soak	○	○	○	×
Bleach	Oxygen	○	○	×
	Chlorine	×	○	×
Dish washer	×	○	×	×
Dish dryer	×	○	×	×

Handy Pouch	<input type="radio"/> Hand wash	Wash lightly with cold or lukewarm water under 40 deg C, and thoroughly dry.
	<input checked="" type="radio"/> Washing machine	

Product Care Precautions

Please read and follow these instructions carefully for proper product care.

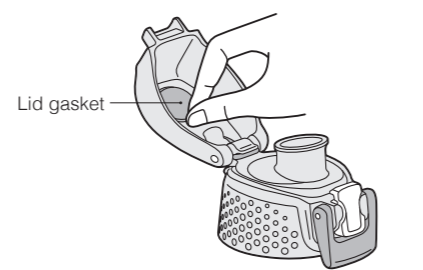
- DO NOT** Do not boil this product. * Heat from this may deform parts, causing leakage, resulting in soiling of property.
- DO NOT** Do not use a dish washer or dish dryer. (Except for gaskets.) * Heat from this may deform parts, causing leakage, resulting in soiling of property. It could also cause coating, printed material, stickers, etc. to peel.
- DO NOT** Do not use paint thinner, benzine, metal scouring pads, polishing powder, or cleanser. * Doing so may cause rust, scratches or malfunction.
- DO NOT** Do not use chlorine bleach. (Except for gaskets.) * Doing so may cause rust or reduce cold insulation capacity. It could also cause the cap unit to malfunction.
- DO NOT** Do not use bleach on the outside of the main unit. * Doing so may cause coating, printed material, stickers, etc. to peel.

Removing/attaching the lid gasket/seal gasket

■ Removing the cap unit [Page 5]

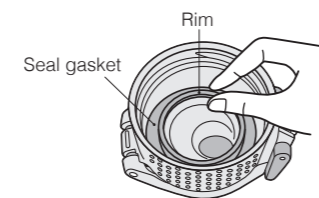
1 Removing the lid gasket

Insert a finger between the lid and lid gasket, running it along the rim of the lid gasket to remove it.



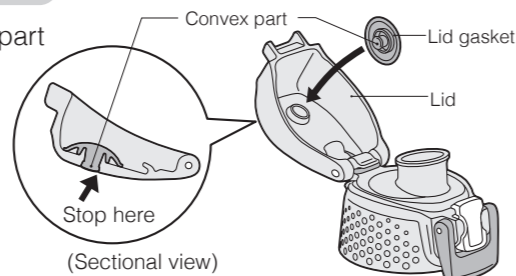
2 Removing the seal gasket

Pinch the stopper gasket's rim to remove it.



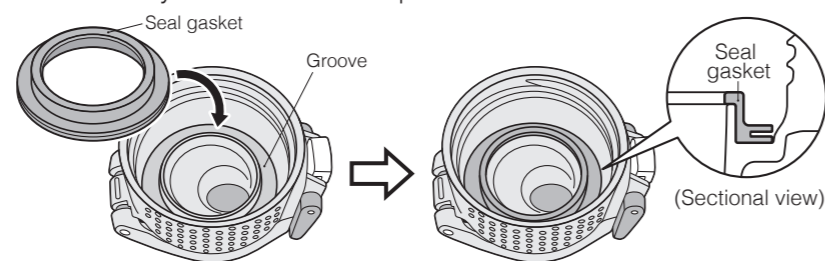
3 Attaching the lid gasket

Push the lid gasket's convex part into the lid's round hole.



4 Attaching the seal gasket

Fit it in all the way around as indicated in the diagram. After attaching, use your fingers to firmly press down on the seal gasket so that it is evenly attached with no space in between.



[General Product Care]

- Wash with a mild dish detergent diluted with lukewarm water, and after rinsing, dry thoroughly.

Cap unit Lid / cap unit / lid gasket / stopper gasket 	Use a soft sponge. * After taking care of your product, be sure the gaskets are attached in their proper positions. [Page 8 ③, ④]
Main unit 	Use a soft sponge or bottle brush. Immediately wipe the outside with a dry cloth. * Failure to do so may cause water droplet marks or rust spots to form.

[Special Product Care]

- Use a bleaching agent for kitchen use according to instructions, then rinse with water and dry thoroughly.

Cap unit Lid / cap unit / lid gasket / stopper gasket 	<Tea stains, etc.> Pour bleach and water into a bowl or similar container, then soak all parts in it. (Approx. 30 minutes) << DO NOT >> Do not use chlorine bleach for the lid and cap unit. * Doing so may cause these parts to rust, or damage the cap unit.
---	---

Inside main unit 	<Tea stains, etc.> Use oxygen bleach or dish detergent on the inside only. (Approx. 30 minutes) << DO NOT: Chlorine bleach >> Do not attach the cap unit. * Internal pressure of the main unit may increase causing the cap unit to pop off, etc. <Red rust spots> Iron content, etc. from water is stuck to the unit. Pour vinegar diluted to about 10% with lukewarm water into the main unit, let it sit for about 30 minutes, then wash it thoroughly. <Rough material> Calcium, etc. from water is stuck to the unit. Pour lukewarm water including 1 to 2% citric acid into the main unit, let it sit for about three hours without the cap unit attached, then wash it thoroughly.
-----------------------------	--

Troubleshooting

If anything is unclear, please check the following section.

Issue	Cause	What to do
Leak from cap unit	The cap unit is loose/not closed securely	Securely close the cap unit. [Page 5 ③]
	The lid is not closed securely	Close the lid firmly, and be sure the lock ring is locked securely. [Page 5 ③, Page 6 ⑤]
	The product is filled too high with liquid	Pour a beverage up to the indicated line. [Page 5 ②]
	A gasket is loose	Attach both gaskets securely in their proper positions. [Page 8 ③, ④]
Color changed inside the main unit	The cap unit or gasket has deteriorated	Purchase replacement parts as necessary. [Page 11]
	Dirt is stuck inside	Use oxygen bleach or dish detergent. [Page 9]
Drink will not stay cold	Red rust spots are stuck inside	Iron content, etc. from water is stuck to the unit. Use vinegar. [Page 9]
	Rough material is stuck inside	Calcium, etc. from water is stuck to the unit. Use citric acid. [Page 9]
An odor is apparent	The product was not filled with an adequately cold beverage	Fill with a cold beverage. Pre-cooling the inside of the main unit in advance is beneficial to maintaining the desired temperature.
	Only a small amount of beverage is inside	Add ice or additional liquid.
A gasket has changed color	Dirt or mold is stuck inside	Wash clean and dry thoroughly. If an odor is still apparent, use oxygen bleach or dish detergent. [Page 9]
	Dirt or mold is stuck inside	Use bleach. If dirt or mold is still apparent, discard the gasket and purchase a replacement gasket set. [Page 11]

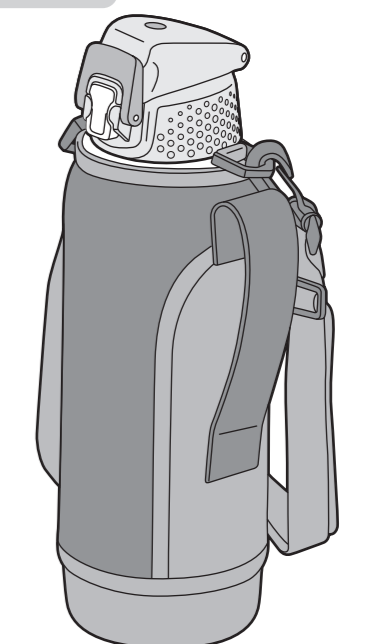
- ◆ If the issue you are experiencing is not included above, please contact us or the store of purchase for assistance. [Page 11]

User Manual

Product No.: FFZ-802FS

Important Read through this manual carefully before use. This manual is required when purchasing new parts, so keep it in a safe place.

Cold Insulation Only

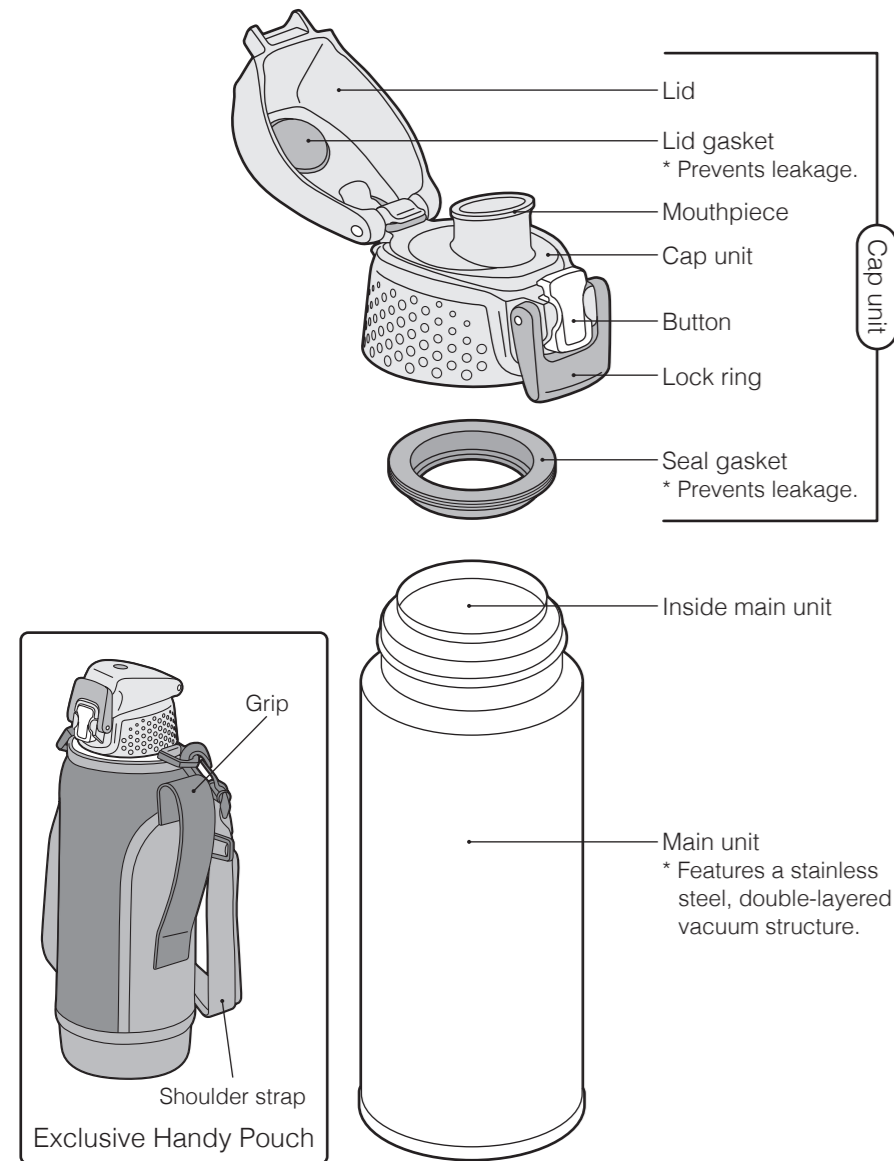


Contents

Before Use	Page 1: Part Names
	Page 2: Safety Precautions
	Page 4: Usage Request
Product Use	Page 5: How to Use
	Page 7: Product Care
If Something is Wrong	Page 10: Troubleshooting
	Page 11: Specifications
	Page 11: Request Replacement Parts (sold separately)
	Page 11: Contact Us

Part Names

Please confirm that all parts are included before use.



Properly attach the cap unit's two specialized gaskets before use.
* Failure to do so could cause leakage.

Safety Precautions

Please read these instructions carefully before use, and follow as necessary.

Icon definitions

■ In order to use this product correctly, the level of danger or injury that may occur due to improper use is indicated as follows.

	WARNING Indicates the possibility of serious injury or death.		CAUTION Indicates the possibility of minor injury or property damage.
--	--	--	--

■ Symbols			
	DO NOT Indicates a prohibited action.		DO Indicates a required action.

WARNING

Do not let children use this product without guardian supervision. Also be sure to prevent infants or toddlers from playing with it.
* Swallowing of small parts may result in choking. This could also lead to injury.

Do not fill with a hot beverage.
* A hot beverage would pour directly into the mouth, possibly causing burns.
* Internal pressure will rise, which means the cap unit may no longer open, or could fly off, and the beverage may spray out suddenly, causing burns or injury.

Do not let toddlers or elementary school aged children wear the shoulder strap around their neck. Instead have them put it over a shoulder to hang at an angle.
* Hanging the shoulder strap on other parts may cause choking or injury.

Do not exercise or play around while wearing the handypouch's shoulder strap.
* Hanging the shoulder strap on other parts may cause choking or injury.

CAUTION

Do not use this product for anything other than a beverage container.
* Doing so may result in injury.

Pour a beverage up to the line indicated by the diagram.
* Overfilling may cause liquid to overflow when the cap unit is twisted shut. It may also cause leakage, resulting in soiling of property while in use.

Keep away from fire, such as a heater or cooking stove.
* Doing so may result in burns.
* This could also deform parts, causing leakage, resulting in soiling of property.

(Sectional view)

Securely close the cap unit. [Page 5]
* Failure to do so may cause leakage, resulting in soiling of property.

Do not drop or bump this product to cause major shock.
* Doing so may cause injury, or leakage, resulting in soiling of property. It could also damage temperature retaining properties, or cause the cap unit to malfunction.

Properly attach the cap unit's two specialized gaskets before use. [Page 8]
* Failure to do so may cause leakage, resulting in soiling of property.

Do not leave a beverage in this product for a long period of time.
* Doing so may result in spoiled beverage or deterioration. Also, a spoiled beverage may generate gas, increasing internal pressure, which means the cap unit may no longer open, or could fly off, and the beverage may spray out suddenly, causing injury or soiling property.

Be sure to attach parts made exclusively for this product.
* Failure to do so may cause leakage, resulting in soiling of property.

When filling the main unit with a beverage, be careful not to knock it over.
* Liquid could spill out soiling property.

Never fill the product with the following.

Dry ice, carbonated drinks
* Internal pressure will rise, which means the cap unit may no longer open, or could fly off, and the beverage may spray out suddenly, causing injury or soiling property.

Be sure to follow the steps below for proper product care.

Do not boil this product.
* Heat from this may deform parts, causing leakage, resulting in soiling of property.

Do not use a dish washer or dish dryer. (Except for gaskets.)
* Heat from this may deform parts, causing leakage, resulting in soiling of property.

Things that spoil easily such as milk, milk-based beverages, and fruit juice
* Doing so may result in spoiled beverage or deterioration.

Do not put this product in the microwave.
* Metallic parts may spark and cause the microwave to malfunction.
* Heat from this may deform parts, causing leakage, resulting in soiling of property.

Storing a spoiled beverage for a long period of time may also generate gas, increasing internal pressure, which means the cap unit may no longer open, or could fly off, and the beverage may spray out suddenly, causing injury or soiling property.

Crush large ice cubes to a smaller size before putting them in the product.
* Failure to do so may alter the cutoff line at the mouth of the main unit, causing leakage, resulting in soiling of property.

Tea leaves, pulp
* Doing so may cause them to get lodged in cracks, resulting in leakage that leads to soiling of property.

Drink the beverage quickly.
* Doing so may result in spoiled or deteriorated beverage.

Never attempt to modify, disassemble, or repair this product.
* Doing so may result in malfunction or accident.

Do not take hold of the handy pouch's grip or shoulder strap to swing it around or pull on it hard.
* Swinging it around could make contact with people in the area, causing injury. Also, pulling on it hard may damage the grip or shoulder strap.

Do not attach or remove the cap unit while its lid is open.
* Doing so may damage the lid causing leakage, resulting in soiling of property, or drop the lid causing injury.

If the swishing sound of water can be heard from inside the double-layered vacuum structure, do not use this product.
* Drinking water which has seeped out of the vacuum layer into the main unit may cause sickness.

Usage Request

Do not fill with liquid high in sodium content, such as miso and certain soups.
* The main unit is made of 18-8 stainless steel on the inside, however, filling it with salty content may cause it to rust, or degrade its cold insulation capability.

Do not use if its cold insulation capability has been reduced.

Do not remove the protective film.
* Doing so may degrade cold insulation capacity.

When storing in a bag, etc. be sure to stand the product up vertically to prevent possible leakage. Also, do not store with valuables (mobile phone, camera, etc.)

Before going out, turn the product upside down to confirm it is not leaking.
* If a leak is found, refer to the "Troubleshooting" section on Page 10.

When carrying, be sure the lock ring is securely locked.

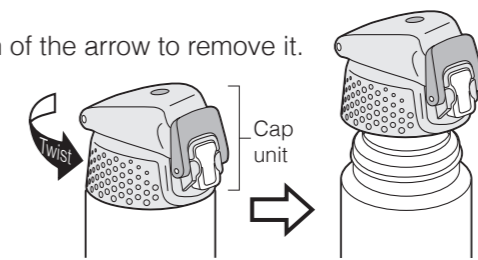
Please note that, during high humidity weather, water droplets (condensation) may stick to the product's cap unit due to the product structure.

The handy pouch's color may fade or migrate under some usage conditions.

How to Use

1 Remove the cap unit

Twist the cap unit in the direction of the arrow to remove it.



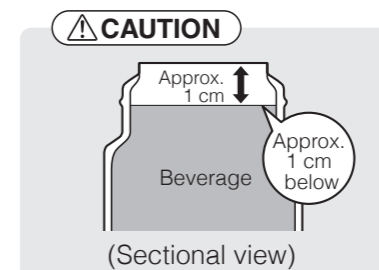
<Before Use>

Be sure to thoroughly wash the cap unit and inside of the main unit. [Page 7]

2 Pour in a beverage

Pour a beverage up to the line indicated by the diagram. Overfilling may cause liquid to overflow when the cap unit is twisted shut.

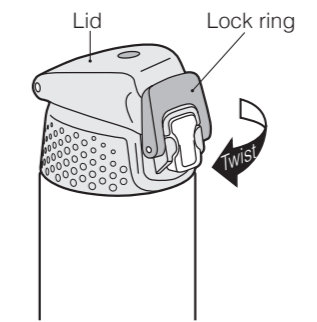
Pouring a small amount of cold water into the main unit to pre-cool it for about a minute is an effective way to retain a cool temperature for your beverage.



3 Close the cap unit

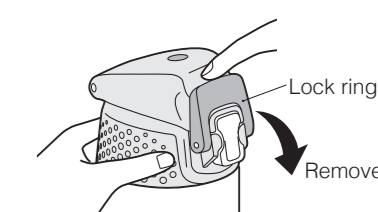
With the lid closed, twist the cap unit in the direction of the arrow to firmly close it.

* Confirm that the lock ring is locked.

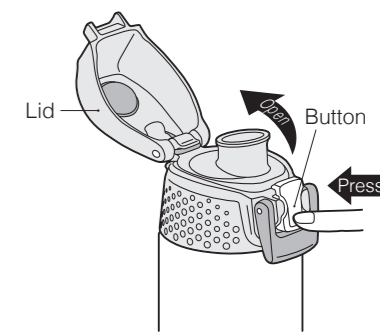


4 Drink the beverage

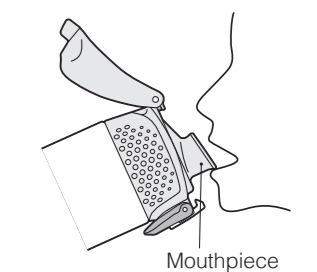
① Stand the main unit vertically, and move the lock ring in the direction of the arrow to unlock it.



② Press the bottom part of the button to open the lid.



③ Press your mouth to the mouthpiece, and slowly tilt upward to drink.



5 When done

① Stand the main unit up, and press down on the lid until you hear a "click" to make sure it is closed.

② Move the lock ring in the direction of the arrow until it is firmly locked.

